

STANDARD ARRIVAL
CHART - INSTRUMENT
(STAR) - ICAO

TRANSITION ALT
10000 FT

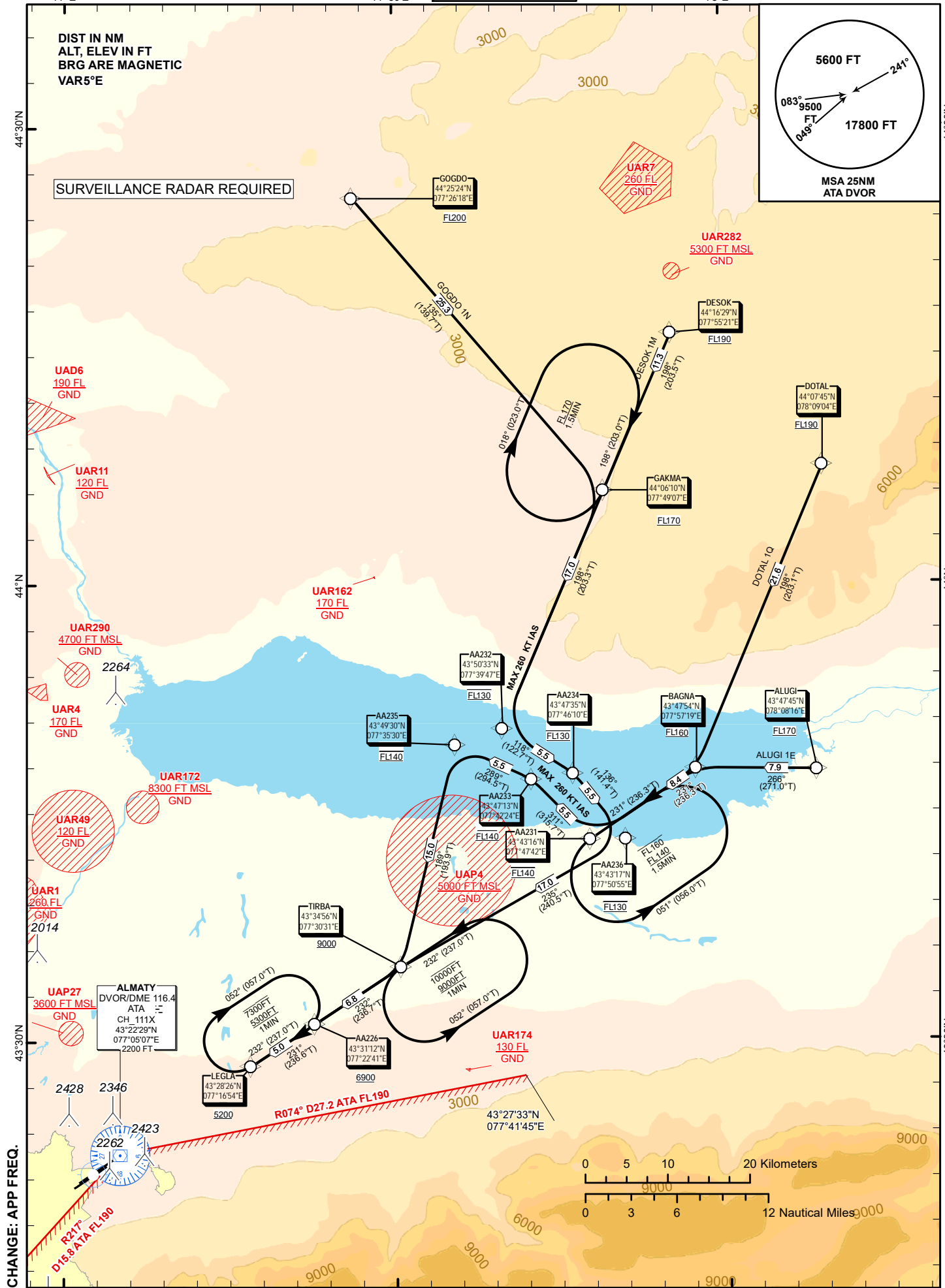
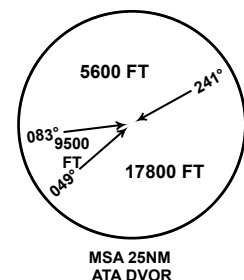
ALMATY APPROACH 118.3
ALMATY RADAR 126.8
ALMATY TOWER 119.4
ALMATY ATIS (EN) 129.8
ALMATY ATIS (RU) 135.1

(RNAV 1 STAR BASED ON GNSS)
ALUGI 1E, DESOK 1M, DOTAL 1Q, GOGDO 1N

ALMATY
RWY 23L/23R

DIST IN NM
ALT, ELEV IN FT
BRG ARE MAGNETIC
VAR5°E

SURVEILLANCE RADAR REQUIRED



TABULAR DESCRIPTION

ALUGI 1E											
Serial Number	Path Descriptor	Waypoint Identifier	Fly - over	Course °M(°T)	Magnetic Variation(°)	Distance NM	Turn Direction	Altitude FT	Speed KT	VPA (°)	Navigation Specification
10	IF	ALUGI	-		5.12	0	-	+FL170	-280	-	RNAV1
20	TF	BAGNA	-	266(271)	5.12	7.9	-	+FL160	-280	-	RNAV1
30	TF	AA231	-	231(236.3)	5.12	8.4	L	@FL140	-260	-	RNAV1
40	TF	AA233	-	311(315.7)	5.12	5.5	R	@FL140	-260	-	RNAV1
50	TF	AA235	-	289(294.5)	5.12	5.5	L	@FL140	-260	-	RNAV1
60	TF	TIRBA	-	189(193.9)	5.12	15	L	+9000	-250	-	RNAV1
70	TF	AA226	-	232(236.7)	5.12	6.8	R	+6900	-230	-	RNAV1
80	TF	LEGLA	-	231(236.6)	5.12	5	R	+5200	-230	-	RNAV1

WAYPOINT LIST

ALUGI 1E		
Waypoint Identifier	Coordinates	
ALUGI	434745.00N	0780816.00E
BAGNA	434754.00N	0775719.00E
AA231	434316.07N	0774741.74E
AA233	434712.50N	0774224.06E
AA235	434929.66N	0773529.57E
TIRBA	433456.00N	0773031.00E
AA226	433111.67N	0772241.01E
LEGLA	432825.52N	0771654.27E

TABULAR DESCRIPTION

DESOK 1M											
Serial Number	Path Descriptor	Waypoint Identifier	Fly - over	Course °M(°T)	Magnetic Variation(°)	Distance NM	Turn Direction	Altitude FT	Speed KT	VPA (°)	Navigation Specification
10	IF	DESOK	-		5.12	0	-	+FL190	-280	-	RNAV1
20	TF	GAKMA	-	198(203.5)	5.12	11.3	-	+FL170	-280	-	RNAV1
30	TF	AA232	-	198(203.3)	5.12	17	-	@FL130	-260	-	RNAV1
40	TF	AA234	-	118(122.7)	5.12	5.5	L	@FL130	-260	-	RNAV1
50	TF	AA236	-	136(141.4)	5.12	5.5	R	@FL130	-260	-	RNAV1
60	TF	TIRBA	-	235(240.5)	5.12	17	R	+9000	-250	-	RNAV1
70	TF	AA226	-	232(236.7)	5.12	6.8	L	+6900	-230	-	RNAV1
80	TF	LEGLA	-	231(236.6)	5.12	5	R	+5200	-230	-	RNAV1

WAYPOINT LIST

DESOK 1M		
Waypoint Identifier	Coordinates	
DESOK	441629.00N	0775521.00E
GAKMA	440610.00N	0774907.00E
AA232	435033.13N	0773946.65E
AA234	434734.97N	0774610.33E
AA236	434317.20N	0775054.69E
TIRBA	433456.00N	0773031.00E
AA226	433111.67N	0772241.01E
LEGLA	432825.52N	0771654.27E

TABULAR DESCRIPTION

DOTAL 1Q											
Serial Number	Path Descriptor	Waypoint Identifier	Fly - over	Course °M(°T)	Magnetic Variation(°)	Distance NM	Turn Direction	Altitude FT	Speed KT	VPA (°)	Navigation Specification
10	IF	DOTAL	-		5.12	0	-	+FL190	-280	-	RNAV1
20	TF	BAGNA	-	198(203.1)	5.12	21.6	-	+FL160	-280	-	RNAV1
30	TF	AA231	-	231(236.3)	5.12	8.4	R	@FL140	-260	-	RNAV1
40	TF	AA233	-	311(315.7)	5.12	5.5	R	@FL140	-260	-	RNAV1
50	TF	AA235	-	289(294.5)	5.12	5.5	L	@FL140	-260	-	RNAV1
60	TF	TIRBA	-	189(193.9)	5.12	15	L	+9000	-250	-	RNAV1
70	TF	AA226	-	232(236.7)	5.12	6.8	R	+6900	-230	-	RNAV1
80	TF	LEGLA	-	231(236.6)	5.12	5	R	+5200	-230	-	RNAV1

WAYPOINT LIST

DOTAL 1Q		
Waypoint Identifier	Coordinates	
DOTAL	440745.00N	0780904.00E
BAGNA	434754.00N	0775719.00E
AA231	434316.07N	0774741.74E
AA233	434712.50N	0774224.06E
AA235	434929.66N	0773529.57E
TIRBA	433456.00N	0773031.00E
AA226	433111.67N	0772241.01E
LEGLA	432825.52N	0771654.27E

TABULAR DESCRIPTION

GOGDO 1N											
Serial Number	Path Descriptor	Waypoint Identifier	Fly - over	Course °M(°T)	Magnetic Variation(°)	Distance NM	Turn Direction	Altitude FT	Speed KT	VPA (°)	Navigation Specification
10	IF	GOGDO	-		5.12	0	-	+FL200	-280	-	RNAV1
20	TF	GAKMA	-	135(139.7)	5.12	25.3	-	+FL170	-280	-	RNAV1
30	TF	AA232	-	198(203.3)	5.12	17	R	@FL130	-260	-	RNAV1
40	TF	AA234	-	118(122.7)	5.12	5.5	L	@FL130	-260	-	RNAV1
50	TF	AA236	-	136(141.4)	5.12	5.5	R	@FL130	-260	-	RNAV1
60	TF	TIRBA	-	235(240.5)	5.12	17	R	+9000	-250	-	RNAV1
70	TF	AA226	-	232(236.7)	5.12	6.8	L	+6900	-230	-	RNAV1
80	TF	LEGLA	-	231(236.6)	5.12	5	R	+5200	-230	-	RNAV1

WAYPOINT LIST

GOGDO 1N		
Waypoint Identifier	Coordinates	
GOGDO	442524.00N	0772618.00E
GAKMA	440610.00N	0774907.00E
AA232	435033.13N	0773946.65E
AA234	434734.97N	0774610.33E
AA236	434317.20N	0775054.69E
TIRBA	433456.00N	0773031.00E
AA226	433111.67N	0772241.01E
LEGLA	432825.52N	0771654.27E